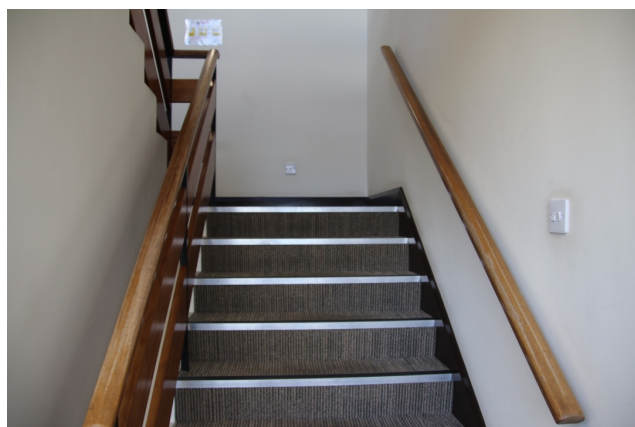


The main **entrance** to the **Autism Guernsey Offices** is just to the left of the Motor Mall showroom.



Push the door to open it.

There are two flights of stairs leading up to the offices.



When you get to the second landing you will see a beige-coloured door.

Pull the door towards you to open it.



Once through the door, turn to your left.

You will see signs on the wall for Autism Guernsey (and also for Carers Guernsey who have an office in the same building).

When you go through the door to the offices you will see the **Reception Desk**.

A member of staff will meet you when you get here. (This may not be the person you are meeting with, but they will ask you who you wish to see and then let the appropriate staff member

(Occasionally if there is no-one at reception, the door to the office will be locked. If this happens, you can ring the doorbell - positioned on the right of the door - and someone will come and let



As well as the main Reception desk, you will see other things in this area; including various office equipment, pictures and drawings displayed on the wall, items for sale, and second-hand books (if you wish to buy any books, you can put a cash donation into the collection tin).

